



**SPECIFICATION FOR
GENERAL HAND TOOLS - TOOL STORAGE**





Government of Maharashtra
Directorate of Vocational Education and Training, Maharashtra State
SPECIFICATION FOR GENERAL HAND TOOLS – TOOL STORAGE

Version 4
2019 - 20

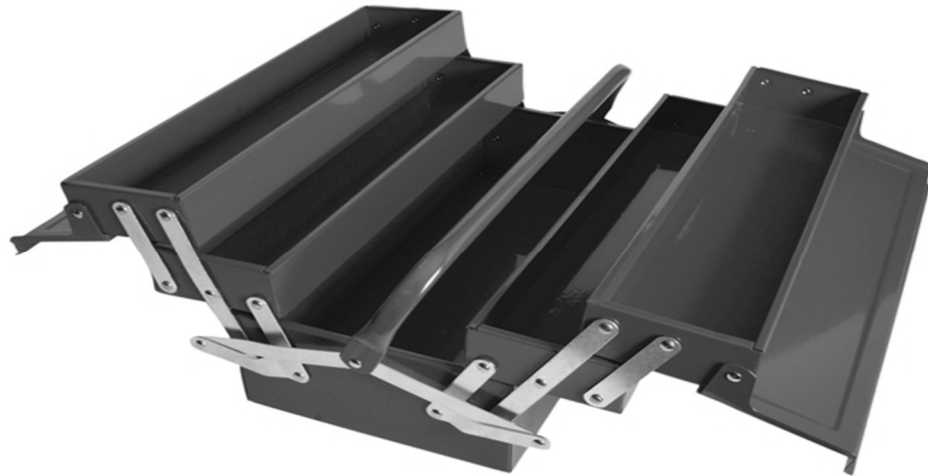
TABLE OF CONTENTS

1	5 Tray Cantilever Tool Box - W:D:H = 450:200:200, \pm 20 mm	3
2	7 Drawer Tool Trolley - W:D:H = 700:450:900, \pm 25 mm	4
3	Plastic Tool Box - W:D:H = 550:300:250, \pm 20 mm	5



1 5 Tray Cantilever Tool Box - W:D:H = 450:200:200, ± 20 mm

1.1 Basic Indicative Diagram:



- 1.2 5 Tray Cantilever box with overall Dimensions:
 - 1.2.1 Width : Depth: Height = 450 mm : 200 mm : 200 mm
 - 1.2.2 Variation: ± 20 mm
- 1.3 Corrosion resistant powder coated finish
- 1.4 Riveting should be of Stainless Steel
- 1.5 Minimum Load Capacity: 33 kg
- 1.6 Construction in CRC Sheet with thickness:
 - 1.6.1 Base and Side: 0.65 mm
 - 1.6.2 Partition: 1.0 mm
- 1.7 Joining Clips should be of CRC Sheet with 1.5 mm thickness
- 1.8 Handle should be of ERW MS Pipe ϕ 12.7 mm X 1.0 mm thick
- 1.9 Provision of Padlock in lid
- 1.10 Color: Blue, Yellow, Red, Orange or Black



2 7 Drawer Tool Trolley - W:D:H = 700:450:900, ± 25 mm

2.1 Basic Indicative Diagram:



- 2.2 7 Drawer Tool Trolley with overall Dimensions:
 - 2.2.1 Width : Depth : Height (with Wheels) = 700 mm : 450 mm : 900 mm
 - 2.2.2 Variation: ± 25 mm
- 2.3 Minimum Load capacity: 450 Kg
- 2.4 Per Drawer Average load capacity: 45 Kg
- 2.5 Centralized keyed locking system with 3 Keys
- 2.6 Single Operation for opening all drawers
- 2.7 Double Wall Steel Construction with thickness:
 - 2.7.1 Base and Side: 0.8 mm
 - 2.7.2 Front Cover: 1.6 mm
- 2.8 Corrosion resistant powder coated finish
- 2.9 Self-locking ball bearing drawer slides
- 2.10 All drawer's lines with 2 mm sheet
- 2.11 4 Heavy Duty Castors: 2 fixed & 2 swivel with toe lock with $\phi 125$ mm X 50 mm thickness
- 2.12 Heavy Duty Side Handle
- 2.13 Rubber Mat on top to avoid scratches with 5mm Thickness
- 2.14 Inside drawers Eva Sheet with 2mm thickness
- 2.15 Color: Blue, Yellow, Red, Orange or Black



3 Plastic Tool Box - W:D:H = 550:300:250, ± 20 mm

3.1 Basic Indicative Diagram:



3.2 Plastic Tool Box with overall Dimensions:

3.2.1 Width : Depth : Height = 550 mm : 300 mm : 250 mm

3.2.2 Variation: ± 20 mm

3.3 Durable Metal Hinges for higher load bearing capacity

3.4 Latch type locks for firm locking

3.5 Inside tray for storing special tools

3.6 Organizer sections on the top to store fasteners & small objects

3.7 Double wall high quality plastic construction preferably Poly Propylene or Acrylo Nitrile Butadine Styrene (ABS)

3.8 Specially designed handle for higher load carrying capacity

3.9 Minimum Load Bearing Capacity: 18 Kg

3.10 Color: Blue, Yellow, Red, Orange or Black