

For Phase 2: Institute Strategic Plan_v1.0

PRAVIN WASUDEORAO GULHANE

+919423434791

Part A: Institutional Details

1 Select your ITI (search with NCVT MIS code)

Monitoring

State/UT : MAHARASHTRA

NCVT MIS Code : GR27000290

Type of ITI : Government

ITI Name : Government Industrial Training Institute, Ghatanji, Dist: Yavatmal

Address : Belora Road

District : YAVATMAL

Website : www.dvet.gov.in

Contact : 723027732

Email : iti.ghatanji@dvet.maharashtra.gov.in

Latest Grading Score : 2.1

Existing CTS Trades : 11

List of trades offered by ITI : Baker and Confectioner, Basic Cosmetology, Computer Operator and Programming Assistant, Dress Making, Electrician, Fitter, Information Communication Technology System Maintenance, Mechanic (Motor Vehicle), Multimedia Animation & Special Effects, Surveyor, Welder

No. of sanctioned units : 18

No. of sanctioned seats : 422

No. of female trainees enrolled : 72

No. of SC trainees enrolled : 39

No. of ST trainees enrolled : 51

No. of trainees enrolled in other category : 160

Total enrolled trainees : 250

Passout Rate : 77

Proportion of female trainees : 28

2 Enter Location

Location



Latitude

20.1540972

Longitude

78.3145545

3 Has the ITI received support under the following schemes:

Choice

- Scheme for upgradation of 1396 Government ITIs in PPP Mode

4 Utilization Percent of funds received under other schemes

Group

Scheme for upgradation of 1396 Government ITIs in PPP Mode

4.1 Total amount received under scheme (INR)

25000000

Text

4.2 Amount of funds utilized (INR)

76%

Text

Details of Principal

5 Name of Principal

Pravin W. Gulhane

Text

6 Mobile Number

IN(+91)-9423434791

Phone

7 Email Id

pravinwgulhane@gmail.com

Email

8 Date of Appointment in the department

02-10-2018

Date

9 Date of joining ITI

02-10-2018

Date

10 Is the Principal full-time?

- Yes

Choice

Revenue generation

12 Does the ITI engage in any revenue generation activities

- Yes

Choice

13 Details of Revenue Generation

Group

Yes

13.1 Detail the revenue generation activities undertaken

PPP

Text

13.2 Revenue generated (in INR lakh) in 2015-16

3792

Number

13.3 Revenue generated (in INR lakh) in 2016-17

27500

Number

13.4 Revenue generated (in INR lakh) in 2017-18

253792

Number

Enrollment Data of Non- CTS Trades

14 Number of other NSQF compliant trades offered in ITI (if any) (with a minimum duration of 300 hours)

0

Number

Placement and Industry Linkage Details

16 **Employment/self-employment/further education Rate of previous graduates** Number
Settings: Limits: [0, Not set]
84

17 **Details of Wage Placement offered to trainees in the academic session 2017-18** Group

CTS Trades (a)

17.1 **Percent of Students Placed against Passed** Number
67

17.2 **Average Annual Salary of the students placed (in INR)** Number
100000

Other NSQF compliant trades (min. duration 300 hours) (b)

17.1 **Percent of Students Placed against Passed** Number
67

17.2 **Average Annual Salary of the students placed (in INR)** Number
100000

Overall (a + b)

17.1 **Percent of Students Placed against Passed** Number
67

17.2 **Average Annual Salary of the students placed (in INR)** Number
100000

18 **Attach Relevant Documentary Proof for Placement Data** File Upload

[View File](#) 

19 **Does the ITI have a functional Training, Counseling and Placement Cell (TCPC)?** Choice

- Yes

20 **Number of staff in Training, Counseling and Placement Cell (TCPC)** Number
Settings: Limits: [0, Not set]

0

22 **Number of Industry sectors currently present in the surrounding geographical region of the ITI** Number

0

24 **Number of MoUs signed with Industries in past 2 years** Number

2

25 Please provide the details of any existing industrial tie-ups or MoUs of the ITI/IMC for the sector(s)

Group

Please provide the details of any existing industrial tie-ups or MoUs of the ITI/IMC for the sector(s)_1

25.1	Name of the Industry Raymond UCO pvt.ltd.	Text
25.2	Industry Sector to which the MoU caters to Nitin Shrivastava	Text
25.3	Type of MoU Industry Partner	Text
25.4	MoU valid till 31-12-2034	Date

Please provide the details of any existing industrial tie-ups or MoUs of the ITI/IMC for the sector(s)_2

25.1	Name of the Industry BOSCH pvt. ltd	Text
25.2	Industry Sector to which the MoU caters to BOSCH ltd	Text
25.3	Type of MoU Training	Text
25.4	MoU valid till 21-12-2020	Date

26 Attach Proof of MoUs/Industrial tie-ups (as a single file)

File Upload

View File 

On-the-Job Training (OJT) Details

27 Number of CTS trades where OJT is required as per curricula
2

Number

28 Details of OJT for each of above CTS trades offered during the last completed academic year

Group

Details of OJT for each of above CTS trades offered during the last completed academic year_1

28.1	Trade Name Fitter	Text
28.2	% of students that undergo OJT as per the prescribed curricula 64	Number

Details of OJT for each of above CTS trades offered during the last completed academic year_2

28.1	Trade Name Fitter	Text
28.2	% of students that undergo OJT as per the prescribed curricula 64	Number

29 Number of other NSQF compliant trades (min. duration 300 hours) where OJT is required as per curricula

Number

0

View File **Instructor details**

32 Please provide details of teaching staff engaged in the ITI	Group
32.1 Total Number of Instructors Settings: Limits: [0, Not set] 14	Number
32.2 Total number of sanctioned posts Settings: Limits: [0, Not set] 08	Number
32.3 Number of sanctioned posts filled by Regular faculty Settings: Limits: [0, Not set] 6	Number
32.4 Number of sanctioned posts filled by contract faculty Settings: Limits: [0, Not set] 0	Number
32.5 Percent of Sanction Posts Filled 42	Number
32.6 Number of Guest lecturers engaged for vacant posts Settings: Limits: [0, Not set] 8	Number
32.7 Total number of CITS certified Trainers Settings: Limits: [0, Not set] 5	Number
32.8 Please indicate salary of Contract Instructors 14000	Number
33 Indicate action initiated and date by when vacant post(s) (if any) of instructor(s) is likely to be filled as per the higher authority	Note
34 Number of designations (positions) for non-teaching staff engaged in ITI 6	Number

Details of non-teaching staff engaged in the ITI_1

35.1	Designation / Job role Principal	Text
35.2	Total Number of Staff for Job Settings: Limits: [0, Not set] 1	Number
35.3	Number of sanctioned posts 1	Number
35.4	Number of posts filled with regular employees 1	Number
35.5	Number of posts filled with contract employees 0	Number

Details of non-teaching staff engaged in the ITI_2

35.1	Designation / Job role senior clerk	Text
35.2	Total Number of Staff for Job Settings: Limits: [0, Not set] 1	Number
35.3	Number of sanctioned posts 1	Number
35.4	Number of posts filled with regular employees 1	Number
35.5	Number of posts filled with contract employees 0	Number

Details of non-teaching staff engaged in the ITI_3

35.1	Designation / Job role junior clerk	Text
35.2	Total Number of Staff for Job Settings: Limits: [0, Not set] 1	Number
35.3	Number of sanctioned posts 1	Number
35.4	Number of posts filled with regular employees 1	Number
35.5	Number of posts filled with contract employees 0	Number

Details of non-teaching staff engaged in the ITI_4

35.1	Designation / Job role class 4	Text
35.2	Total Number of Staff for Job Settings: Limits: [0, Not set] 3	Number
35.3	Number of sanctioned posts 3	Number
35.4	Number of posts filled with regular employees 2	Number

35.5	Number of posts filled with contract employees	Number
	0	

Details of non-teaching staff engaged in the ITI_5

35.1	Designation / Job role	Text
	peon	

35.2	Total Number of Staff for Job	Number
	Settings: Limits: [0, Not set]	
	1	

35.3	Number of sanctioned posts	Number
	1	

35.4	Number of posts filled with regular employees	Number
	1	

35.5	Number of posts filled with contract employees	Number
	0	

Details of non-teaching staff engaged in the ITI_6

35.1	Designation / Job role	Text
	sweeper	

35.2	Total Number of Staff for Job	Number
	Settings: Limits: [0, Not set]	
	1	

35.3	Number of sanctioned posts	Number
	1	

35.4	Number of posts filled with regular employees	Number
	1	

35.5	Number of posts filled with contract employees	Number
	0	

36	Indicate action initiated and date by when non-teaching vacant post(s) is likely to be filled as per the higher authority	Note
----	---	------

Part B: Strategic Plan

37	Attach Filled Template of Strategic Plan	File Upload
	View File 	

Part C: Procurement Plan

38	Attach Filled Template of Procurement Plan	File Upload
	View File 	

Part D: IMC Details

39	Attach Filled Template of IMC/equivalent Details	File Upload
	View File 	

Part E: Testimonials and Other Supporting Multimedia Information

40	Testimonial (Principal)	Video
	View it on https://collect.atlan.com/	

41 Testimonial (Faculty)

Video

View it on <https://collect.atlan.com/>

42 Testimonial (Existing Trainee/ Alumni -1)

Video

View it on <https://collect.atlan.com/>

43 Testimonial (Existing Trainee/ Alumni - 2)

Video

N/A

44 Testimonial (Existing Trainee/ Alumni - 3)

Video

N/A

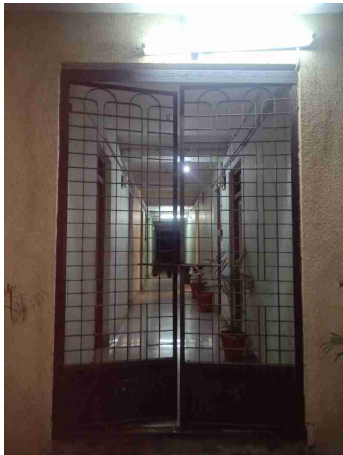
45 IT Lab Photograph

Image Geo Tag



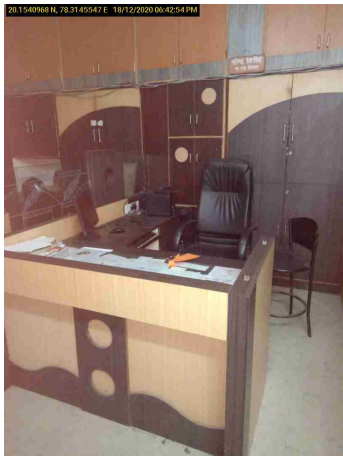
46 Hostel Photograph

Image



47 Revenue Generation Center Photograph

Image Geo Tag



48 Training and Placement Cell Photograph

Image Geo Tag

